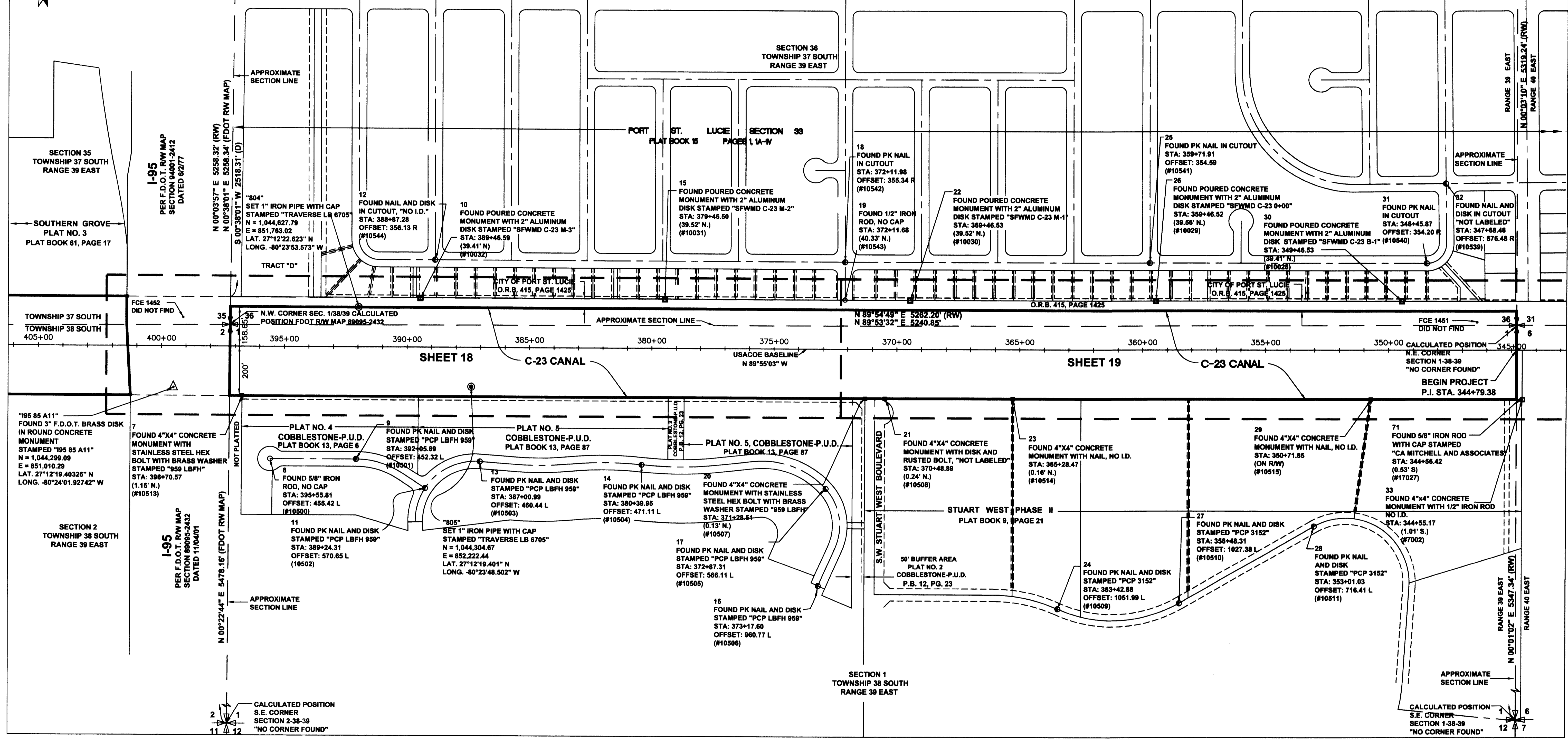


THIS MAP IS INTENDED TO BE DISPLAYED AT A SCALE OF 1" = 200' OR SMALLER

26
25
35
36
CALCULATED POSITION
N.E. CORNER
SECTION 35-37-39
"NO CORNER FOUND"
CALCULATED POSITION
N.E. CORNER OF
S.E. 1/4 OF
SECTION 35
"NO CORNER FOUND"

25
30
36
31
CALCULATED POSITION
N.E. CORNER
SECTION 36-37-39
"NO CORNER FOUND"



FOUND CONTROL DATA - NAD 83/2007
(SEE NOTE #1 - THIS SHEET REPLACES THAT PORTION OF PREVIOUS SURVEY, JOB NUMBER 26102.06)

NAME	NORTHING	EASTING	LATITUDE	LONGITUDE
7	1044266.82	851289.96	27°12' 19.070" N	080°23' 58.832" W
8	1044013.14	851404.49	27°12' 16.553" N	080°23' 57.577" W
9	1044012.93	851754.42	27°12' 16.534" N	080°23' 53.701" W
10	1044664.42	852014.30	27°12' 22.973" N	080°23' 50.788" W
11	1043894.34	852035.89	27°12' 15.346" N	080°23' 50.590" W
12	1044821.10	852073.75	27°12' 24.522" N	080°23' 50.121" W
13	1044004.35	852259.31	27°12' 16.425" N	080°23' 48.110" W
14	1043993.10	852920.34	27°12' 16.282" N	080°23' 40.789" W
15	1044663.65	853014.38	27°12' 22.918" N	080°23' 39.712" W
16	1043502.79	853642.25	27°12' 11.392" N	080°23' 32.820" W
17	1043897.42	853672.89	27°12' 15.289" N	080°23' 32.460" W
18	1044818.81	853749.04	27°12' 24.419" N	080°23' 31.567" W
19	1044663.80	853749.21	27°12' 22.894" N	080°23' 31.573" W
20	1044263.52	853832.02	27°12' 18.916" N	080°23' 30.878" W

FOUND CONTROL DATA - NAD 83/2007
(SEE NOTE #1 - THIS SHEET REPLACES THAT PORTION OF PREVIOUS SURVEY, JOB NUMBER 26102.06)

NAME	NORTHING	EASTING	LATITUDE	LONGITUDE
21	1044263.56	853911.84	27°12' 18.913 N	080°23' 29.796 W
22	1044862.75	854014.35	27°12' 22.861 N	080°23' 28.637 W
23	1044263.02	854432.06	27°12' 18.883 N	080°23' 24.032 W
24	1043410.70	854616.89	27°12' 10.434 N	080°23' 22.031 W
25	1044816.96	854989.11	27°12' 24.341 N	080°23' 17.832 W
26	1044861.90	855014.37	27°12' 22.804 N	080°23' 17.561 W
27	1043434.87	855111.48	27°12' 10.649 N	080°23' 16.552 W
28	1043745.35	855659.04	27°12' 13.697 N	080°23' 10.471 W
29	1044261.56	855888.67	27°12' 18.798 N	080°23' 07.899 W
30	1044861.06	856014.35	27°12' 22.748 N	080°23' 06.486 W
31	1044815.56	856115.15	27°12' 24.272 N	080°23' 05.361 W
32	1045137.78	856192.83	27°12' 27.460 N	080°23' 04.483 W
33	1044259.99	856505.25	27°12' 18.752 N	080°23' 01.071 W
71	1044260.47	856504.01	27°12' 18.757 N	080°23' 01.084 W

SEE SHEET 6 FOR SET CONTROL AND BASELINE INFORMATION.

SEE SHEET 7 FOR ADDITIONAL FOUND MONUMENTATION.

SOUTH FLORIDA WATER MANAGEMENT DISTRICT
REAL ESTATE DEPARTMENT - SURVEY SECTION
P.O. BOX 24680
3301 GUN CLUB ROAD
WEST PALM BEACH, FLORIDA 33416-4680

CHECKED: P.M. DATE: 12-20-10 SCALE: 1"=200'
DRAWN: D.A.L.
FIELD PERSONS: [List of names]
FIELD DATES: [List of dates]
FIELD BOOKS: [List of books]
FILES: [List of files]

PORTION OF C-23 CANAL
KEY SHEET AND PROJECT CONTROL
SECTIONS 31, 32, 33, 34, 35 AND 36, TOWNSHIP 37 SOUTH, RANGE 39 EAST
AND SECTIONS 1, 2, 3, 4, 5 AND 6, TOWNSHIP 38 SOUTH, RANGE 39 EAST

DRAWING NO. 26102.06
CAD FILE NO. 26102.06 SFWMD
C23 BND 7
SURVEY.Dwg
SHEET 25
PLOT SCALE: 1" = 1" (PAPER SPACE)